

SPECIFICATIONS

Range	0.00 to 2.50 ppm
Resolution	0.01 ppm
Accuracy	±0.03 ppm ±3% of reading @ 25 °C
Typical EMC Dev.	±0.01 ppm
Light Source	Light Emitting Diode @ 525 nm
Light Detector	Silicon Photocell
Method	Adaptation of USEPA method 330.5. The reaction between free chlorine and the DPD reagent causes a pink tint in the sample.
Environment	0 to 50°C (32 to 122 °F) max. 95% RH non-condensing
Battery Type	1 x 1.5V AAA
Auto-Shut Off	After 2 minutes of non-use
Dimensions	87.5 x 63.7 x 35.2 mm (3.4 x 2.5 x 1.4")
Weight	65 g (2.29 oz.)

OPTIONAL ACCESSORIES

Reagent Sets	
MI526-25	Free Chlorine powder reagent, 25 pcs.
Other Accessories	
3000100	Glass cuvettes with caps (2 pcs.)
3000200	Tissue fow wiping cuvettes (2 pcs.)
3000300	1.5V AAA batteries (4 pcs.)

CERTIFICATION

Milwaukee Instruments conform to the CE European Directives.

Disposal of Electrical & Electronic Equipment. Do not treat this product as household waste. Hand it over to the appropriate collection point for the recycling of electrical and electronic equipment.

Disposal of waste batteries. This product contains batteries. Do not dispose of them with other household waste. Hand them over to the appropriate collection point for recycling.

Please note: proper product and battery disposal prevents potential negative consequences for human health and the environment. For detailed information, contact your local household waste disposal service or go to www.milwaukeeinstruments.com (USA & CAN) or www.milwaukeeinst.com.



RoHS
compliant



RECOMMENDATION

Before using this product, make sure it is entirely suitable for your specific application and for the environment in which it is used. Any modification introduced by the user to the supplied equipment may compromise the meter's performance. For your and the meter's safety do not use or store the meter in hazardous environment. To avoid damage or burn, do not perform any measurement in microwave ovens.

WARRANTY

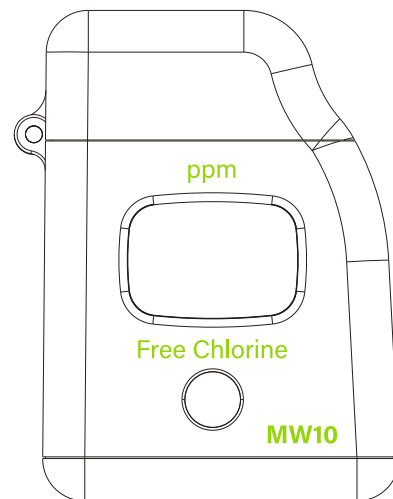
This instrument is warranted against defects in materials and manufacturing for a period of 2 years from the date of purchase. This warranty is limited to repair or free of charge replacement if the instrument cannot be repaired. Damage due to accidents, misuse, tampering or lack of prescribed maintenance is not covered by warranty. If service is required, contact your local Milwaukee Instruments Technical Service. If the repair is not covered by the warranty, you will be notified of the charges incurred. When shipping any meter, make sure it is properly packaged for complete protection.

Milwaukee Instruments reserves the right to make improvements in design, construction and appearance of its products without advance notice.

USER MANUAL

MW10

Digital Free Chlorine Mini Photometer



milwaukeeinstruments.com (USA & CAN)
milwaukeeinst.com

 milwaukee

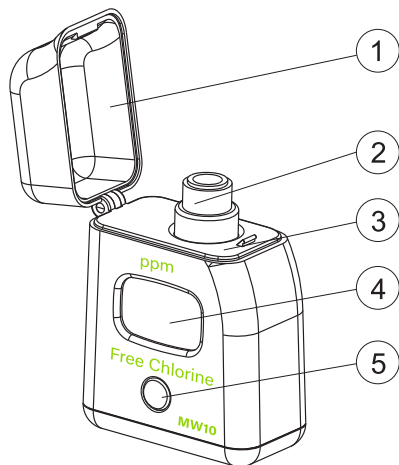
PRELIMINARY EXAMINATION

Please examine this product carefully. Make sure that the instrument is not damaged. If any damage occurred during shipment, please notify your Dealer.

Each **MW10** meter is supplied complete with:

- Two Sample Cuvettes and Caps
- Six powder reagents for Free Chlorine
- 1 x 1.5V AAA Battery
- Instruction Manual

FUNCTIONAL DESCRIPTION



1. Dust cover
2. Cuvette with cap
3. Cuvette holder
4. Liquid Crystal Display
5. Button

OPERATION

- Turn the meter on by pressing the button. After all the segments are displayed, "C.1", "Add" appears with "Press" blinking, the meter is ready.



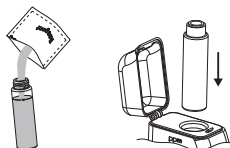
- Fill the cuvette with 10 mL of unreacted sample and replace the cap. Place the cuvette into the meter and close the meter's cap.



- Press the button. When the display shows "Add", "C.2" with "Press" blinking the meter is zeroed.



- Remove the cuvette, open it and add the content of one packet of **MI526-0** reagent. Replace the cap and shake gently for 20 seconds. Replace the cuvette into the meter.



- Wait for 1 minute and then press the button or press and hold the button until the timer is displayed on the LCD.



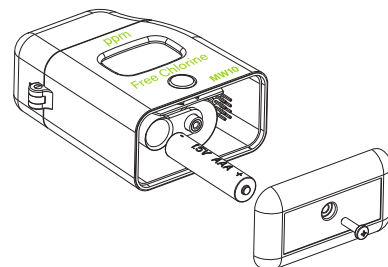
- The instrument directly displays the concentration of free chlorine in ppm. The meter automatically turns off after 2 minutes.



BATTERY REPLACEMENT

To save the battery, the instrument shuts down after 2 minutes of non-use. One fresh battery lasts for a minimum of 5000 measurements, depending on the light level. When the battery capacity is under 10 % "bAt" appears on the LCD at start-up.

If the battery is empty and accurate measurements can't be taken any more, the instrument shows "bAd" then "bAt" each for 1 second and turns off. To restart the instrument, the battery must be replaced with a fresh one.



To replace the instrument's battery, follow the steps:

- Turn the instrument off by holding the button until the meter shuts off.
- Turn the instrument upside down and remove the battery cover with a screwdriver.
- Remove the battery from its location and replace it with a fresh one.
- Insert the battery cover and replace the screw with a screwdriver.