

Testo 445

The Testo 445 VAC measuring instrument with its multi-function technology measures temperature, relative humidity, dew point, absolute humidity, degree of humidity, enthalpy, all types of air velocity (in ducts, duct openings or in extractors), pressure and indoor air quality.

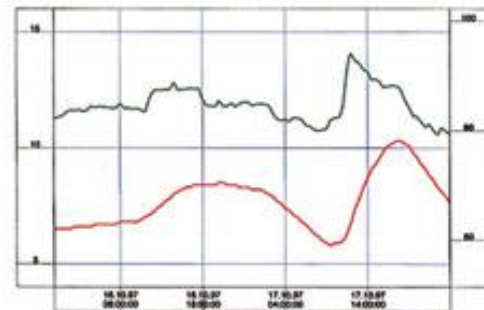
Its main features are as follows:

- Automatic mean calculation and volume flow measurement
- Automatic allocation of duct cross-section to location
- Internal data memory
- Quick Printing of data on location
- TopSafe for industrial applications



The instrument for daily measuring tasks in the VAC branch

- Standard velocity measurements via averaging
- Volume flow measurements in duct outlets
- Comparison of relative humidity in the air sucked in from outdoors with the conditioned air flowing out from the exhaust outlets
- Monitors filters by measuring differential pressure
- Monitors indoor air quality with CO₂ probe



Technical Specifications

Temperature Measurement

Type K (NiCr-Ni)

Measuring Range	-200 to +1370°C
Resolution	0.1°C
Accuracy of Instrument	±0.3°C or ±0.5% of measured value at +22°C

Humidity Measurement

Measuring Range	0 to 100%RH
Resolution	0.1%RH
Measuring Range	-50 to +180°C
System Accuracy	See Probes
Calculated Humidity Parameters:	Td, g/m ³ , g/kg, J/g (pressure compensated)

Velocity Measurement

Thermal Probes:	
Measuring Range	0 to 20 m/s
Resolution	0.01 m/s (0 to 10m/s), 0.1 m/s (remainder)
Accuracy	Refer to Probes
Vane Probes:	
Measuring Range	0 to 60 m/s
Resolution	0.01 m/s
Accuracy	Refer to Probes
Calculated volume flow:	m ³ /h, m ³ /min, m ³ /sec, l/s, cfm

Pressure Measurement

Measuring Range	100 mbar (?P)
Resolution	0.01mbar
Accuracy	0.1mbar (0 to 20 mbar) 1% of m.v. (remainder)
Calculated Velocity Values:	0 to 100 m/s, 0 to 99999 m ³ /h

CO₂ Measurement

Measuring Range	0 to 10,000 ppm / 0 to 1% vol.
-----------------	--------------------------------

CO Measurement

Measuring Range	0 to 500 ppm
-----------------	--------------

Additional Features

Typical Battery Lifetimes	9V PP3 (Al-Mn). 6 -45h. Dependant on probe.
Dimensions	215 x 68 x 47mm
Weight	Approx. 255g incl. Battery
Housing	ABS
Operating Temperature	0 to +50°C
Storage/Transport Temperature	-20 to +70°C
Warranty	2 years Probes: 1 year

Accuracy quoted: ±1 digit.