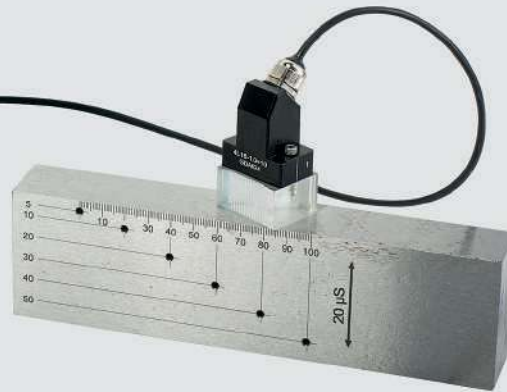


# ULTRASONIC Testing

**NEW**  
**PHASED ARRAY**  
**SYSTEM**



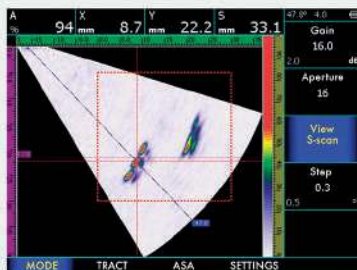
**Phased Array Flaw Detector**  
**NOVOTEST UD4701PA**



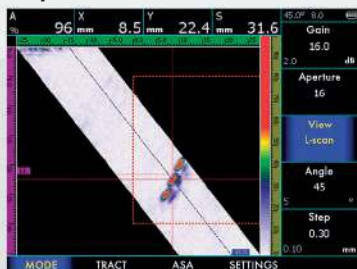
Ultrasonic Phased Array Flaw Detector is designed for testing of metal and composite products, pipeline welds, forgings and castings, aircraft objects, corrosion inspection, etc. in accordance to **EN 12668-1**, **ISO 18563-1**.

NOVOTEST UD4701PA can be used both with standard 1 channel transducers and PA 16 channel probes. Using SAFT method the device allows to get high resolution and quality image of scanning. Using replaceable prisms, allows to avoid wear of the transducers and inspect any curved surfaces.

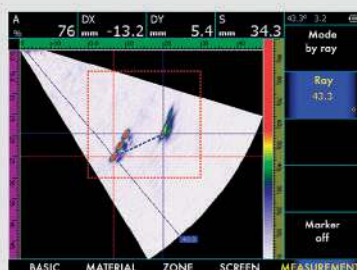
Based on innovation technologies, the device has light weight (1,5 kg) and includes such functions, as A, B, C, D, S, L-scan, TOFD, DAC, DGS, AFS, AWS modes, automatic calibration of ultrasonic velocity, reconstruction mode of weld joints geometry and others.



**Scanning with 16 channel PA probe**



**S-scan and L-scan**



**Measuring relative dimensions of the defects using marker**

